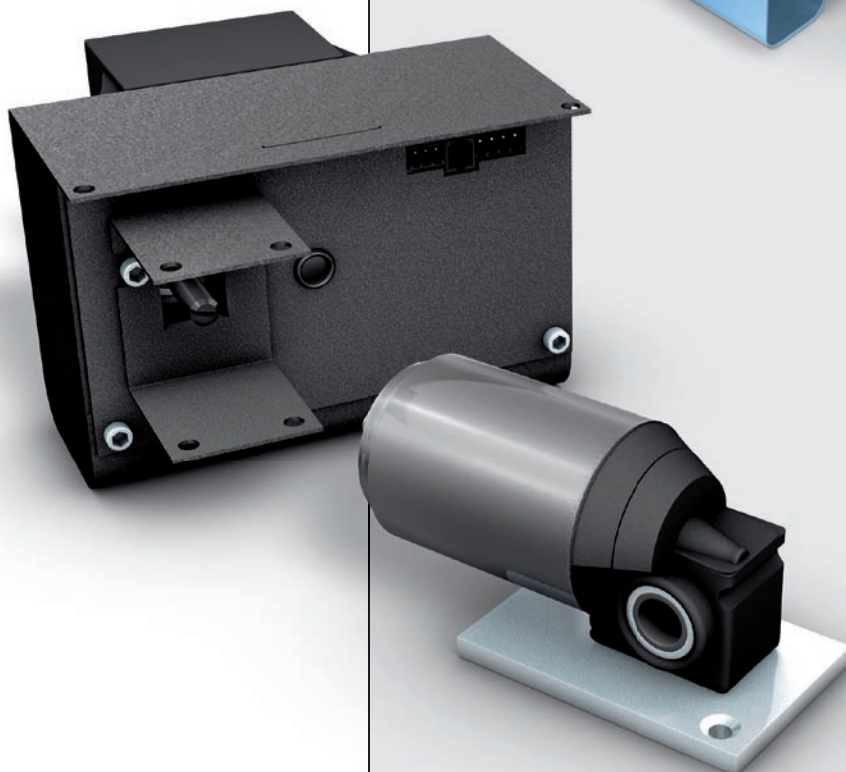
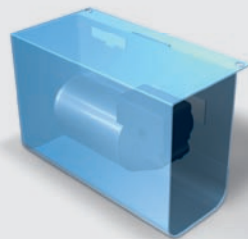


The pumps are operated with a hand crank or with an electric drive. The drives are compatible with all Ergoswiss hydraulic pumps. Select the suitable drive according to load or lift speed.



**Type A and Type B**

The two drive types are controlled by a simple cable remote control with up/down keys. We recommend **Type B** for high loads. The engine and the control are built into the housing. The transformer (230 VAC, optionally 110 VAC) is attached on the outside of the housing. The cable remote control (2 m cable length) is installed below the table edge at the desired location, and can be pushed under the table top.

**Type C**

On drive **Type C** different heights can be memorized and automatically selected. The memory board also has a digital height indicator. The infrared remote control is available as an alternative to the memory board. The power supply (230 VAC, optionally 110 VAC) is integrated into the control unit. The memory board (2.5 m cable length) is installed below the table edge at the desired location, and can be pushed under the table top.

A current supervision element protects the drive from overload and at the same time serves a protective function during the raising of the system.

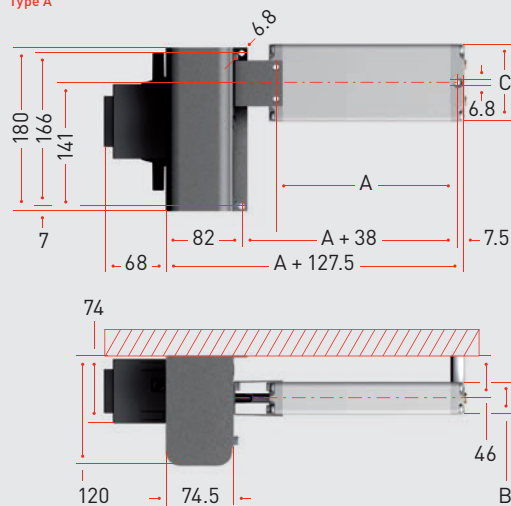
The system comprises all parts as well as installation of the drive to the pump. The drive is installed on the holes provided.

The drives are not suitable for continuous operation. After a run-time of one minute the drive needs a rest of approx. 20 minutes (OT 5%). The motor drive lessens the nominal lift by approx. 15 mm.

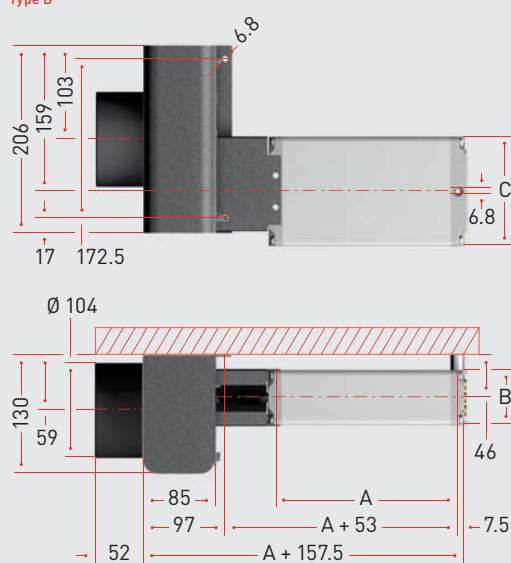
# Type A/B/C



Type A

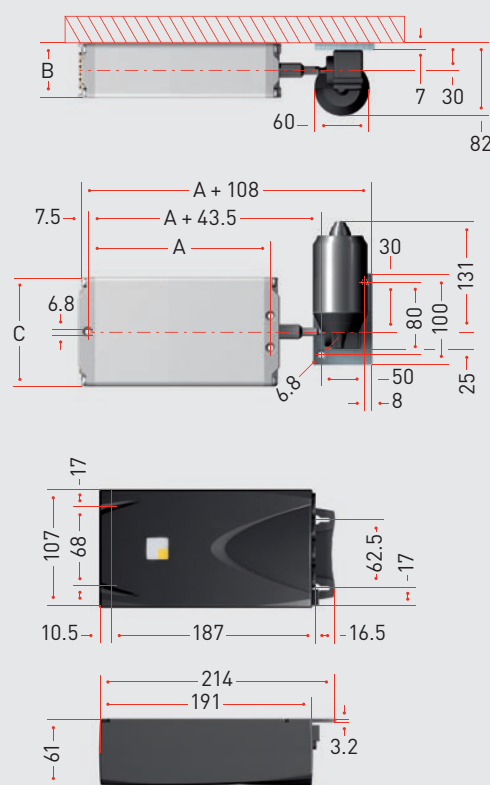


Type B

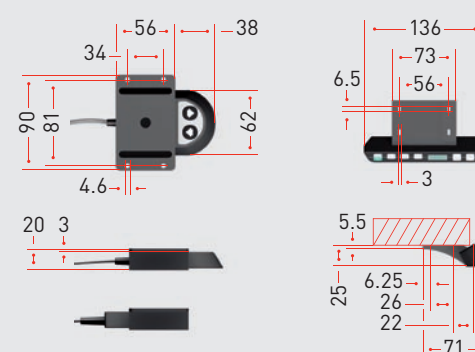


The mass **A**, **B** and **C** depend on the pump type used. You will find the mass on page 7 under dimensioning of the pumps.

Type C and control unit



Cable remote control, Memory board



## TECHNICAL DATA

### Type A

- CE/SEV-tested
- Dimensions 180 x 120 x 127.5
- System voltage 230/110 VAC
- Engine voltage 29 VDC
- Nominal rating approx. 160 VA
- Nominal speed 140 min<sup>-1</sup>
- Nominal torque 1.7 Nm
- Fastening torque 17 Nm
- Thermal protection

### Type B

- CE-tested
- Dimensions 206 x 130 x 157.5
- System voltage 230/110 VAC
- Engine voltage 38 VDC
- Nominal rating approx. 240 VA
- Nominal speed 210 min<sup>-1</sup>
- Nominal torque 5 Nm
- Fastening torque 55 Nm
- Thermal protection

### Type C

- CE/TÜV/UL-certified
- 4 memory positions
- Digital display of height
- System voltage 230/110 VAC
- Engine voltage 29 VDC
- Nominal rating approx. 140 VA
- Nominal speed 120 min<sup>-1</sup>
- Protection type IP30
- Overload protection
- ISP function