



The core parts of our adjustable systems are the pumps **PA** and **PB**. The flexible connections, which need only minimal space, as well as the possibility of attaching the pumps in any position even outside a system, gives the designer the possibility of installing the Ergoswiss-System in very thin or complex objects.

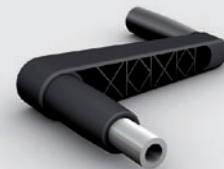
Our pumps lift weights up to 1000 kg quietly, and are step less and completely synchronous – even with an asymmetrical load. They are powered by an electric drive or a hand crank.

You have the choice of two pump types:

- Pump **PA** to control one or two cylinders with a max. load of 300 kg.
- Pump **PB** to control three to ten cylinders with a max. load of 1,000 kg.

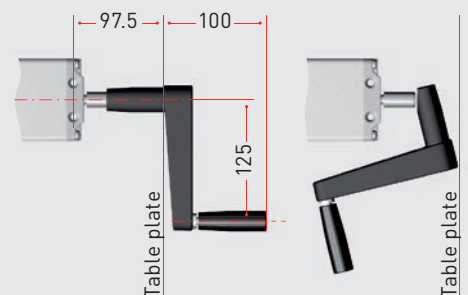
A reset force of at least 50 N (5 kg) per cylinder should be available to push the oil back into the pump during retraction (single acting system).

The pumps and cylinders are connected by a hydraulic hose ( $\varnothing$  4 mm). The max. hose length is 8 m. The minimal bending radius is 25 mm. Three attachment holes are provided for the installation of the pumps. The pump housing is made of an extruded aluminum sheath and is colorless anodized.



The hand crank completely disappears under the table if it is folded together. The dowel pin that attaches the crank to the pump protects the pump from overloading.

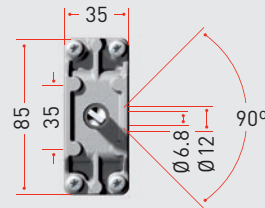
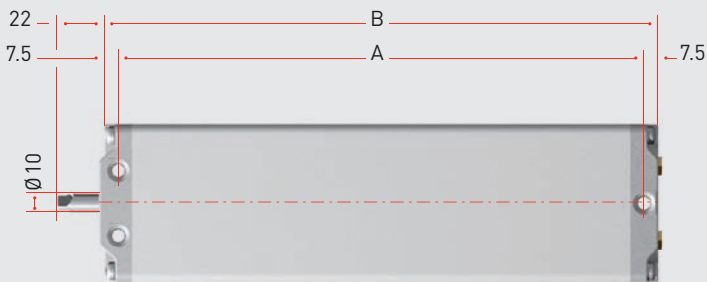
Crank radius 125 mm. A detachable crank is also available.



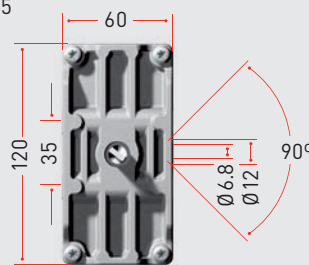
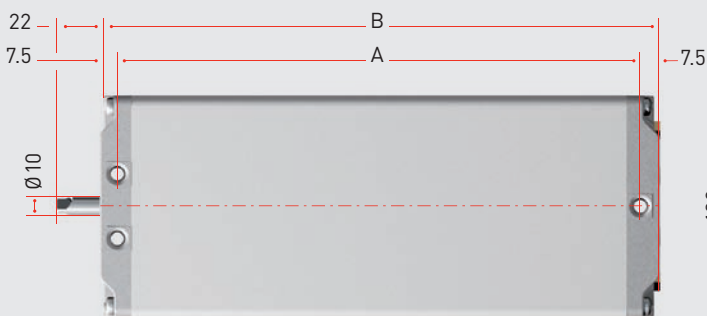
# Type PA/PB



PA



PB



## TECHNICAL DATA

- Type **PA** to control 1 or 2 cylinders  
Type **PB** to control 3 to 10 cylinders
- Type **PA** max. load 300 kg  
Type **PB** max. load 1.000 kg
- Maximum lift speed 10 mm per crank turn, with electric motor max. 30 mm/s
- There is also the possibility to use food-friendly fluids
- Other models upon request

## Dimensions

Pump type	A [mm]	B [mm]	Pump type	A [mm]	B [mm]	Pump type	A [mm]	B [mm]
PX n615	283.5	298.5	PX n815	283.5	298.5	PB n415/18	465.5	480.5
PX n620	283.5	298.5	PX n820	343.5	358.5	PB n420	585.5	600.5
PX n630	283.5	298.5	PX n830	465.5	480.5	PB n430	707.5	722.5
PX n640	465.5	480.5	PX n840	585.5	600.5	PB n440	908.5	923.5
PX n650	465.5	480.5	PX n850	707.5	722.5			
PX n660	465.5	480.5	PX n860	827.5	842.5			

X = Pump type **A** or **B**

n = Number of controllable cylinders (1-10 cylinders)