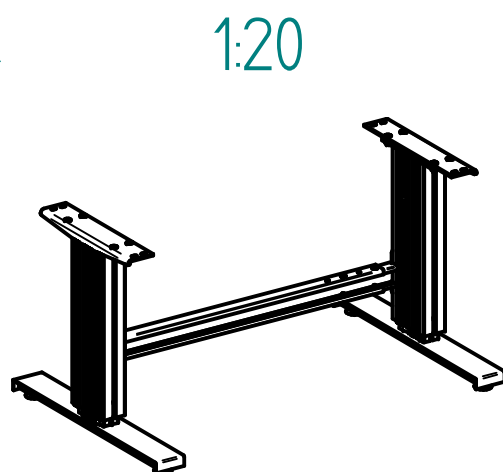
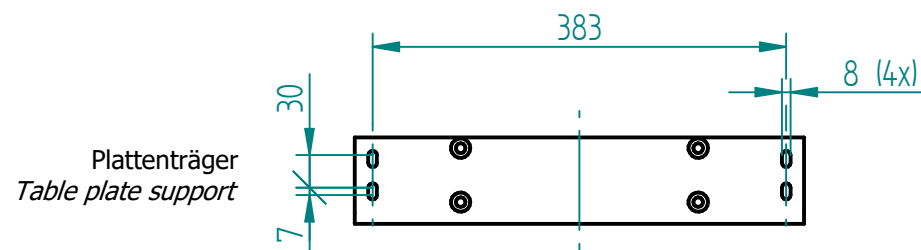
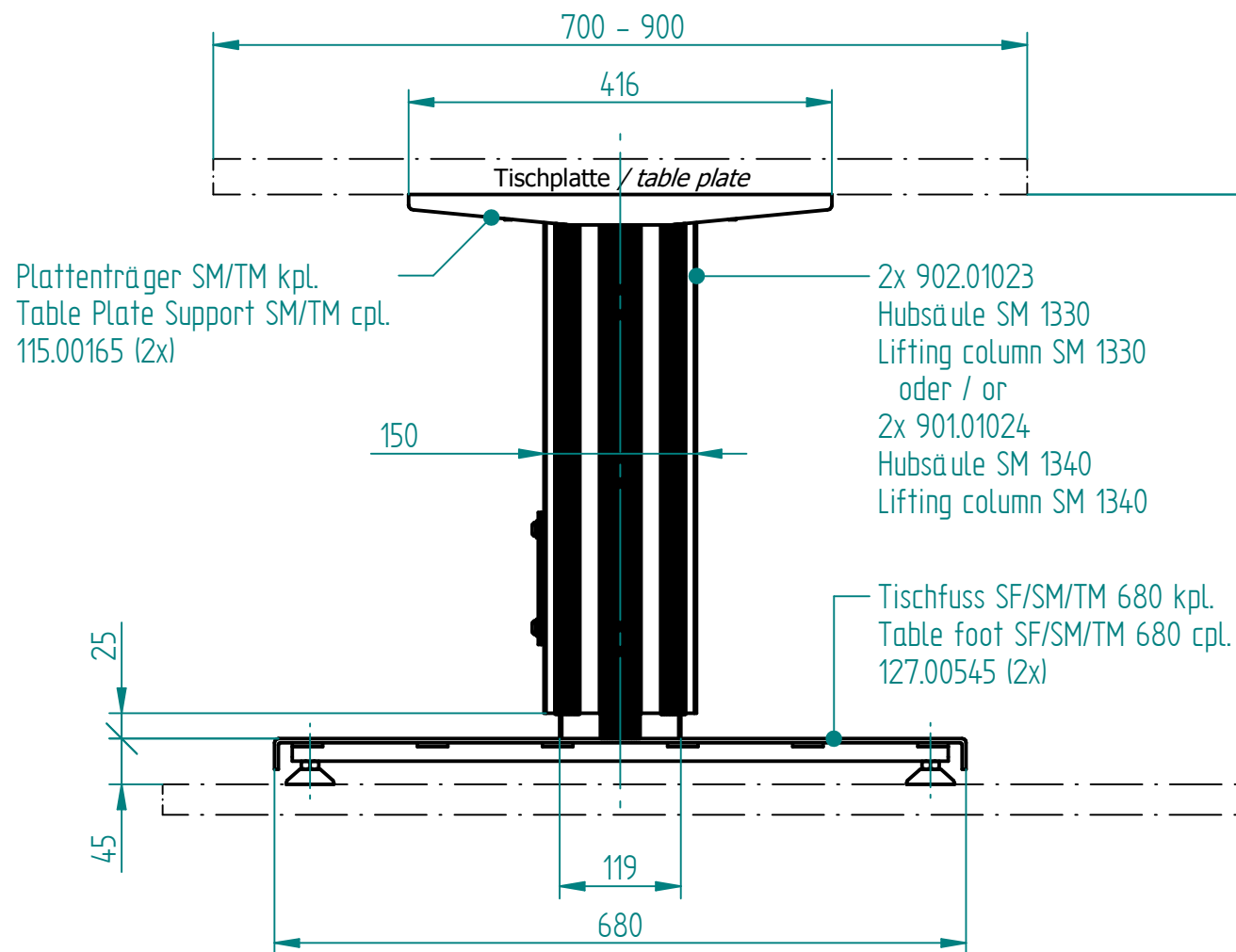
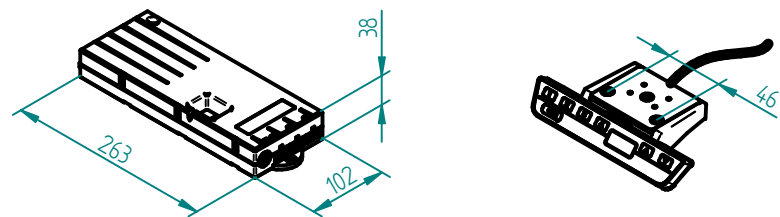
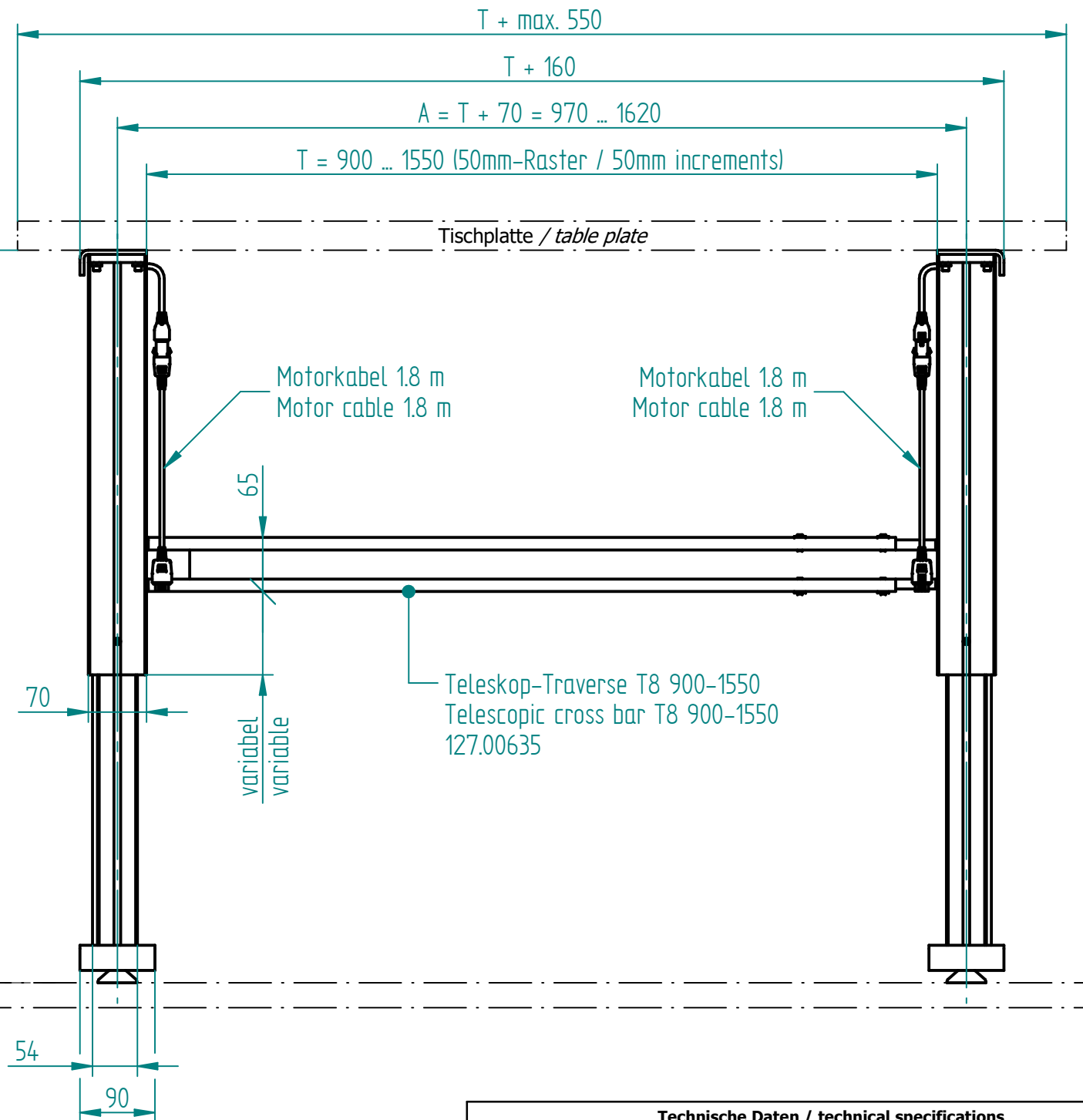
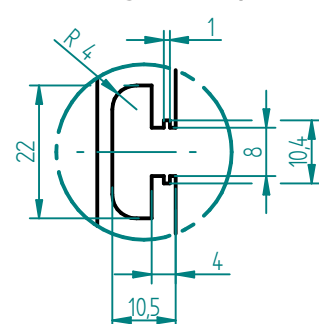


beigelegt / enclosed:

- Steuerung Compact / Control box Compact
- XX = länderspez. Netzkabel / XX = Country specific power cable
- 02 = Handtaster Compact Typ Memory / 02 = Hand switch Compact Type Memory
- Befestigungsschrauben für Tischplatte / Mounting screws for table plate



Nutengeometrie
T-Slot geometry



Technische Daten / technical specifications	
max. Traglast pro Hubsäule / max. load per lifting column	2'000 N
max. Systembelastung / max. system load	4'000 N
max. statische Zugbelastung / max. static tensile load	500 N
max. dynamische Zugbelastung / max dynamic tensile load	50 N
max. Hub / max. stroke	300 mm / 400 mm
Hubgeschwindigkeit / lifting speed	12 mm/s
Aluminiumprofile / aluminium profiles	farblos eloxiert / colorless anodized
Führungsart / type of guidance	Gleitführung (Kunststoff) / slide (plastics)

Name	Hub / Stroke	H	XX = EU	XX = CH	XX = US
SM 2430 970-1620 XX 02	300	580	902.30008	902.30108	902.30408
SM 2440 970-1620 XX 02	400	680	902.30058	902.30158	902.30458

Index	Datum / Date	Name	Änderungsmittelung / notification of change
01	24.11.2021	tiho	1140: Umstellung von Handtaster Memory
GEZEICHNET / DRAWN	20.11.2017	tiho	GEWICHT / WEIGHT: -----
GEPRÜFT / CHECKED	20.11.2017	anhe	BEZEICHNUNG / ASSEMBLY NAME: Untergestell SM 24XX 970-1620 XX 02
MABSTAB / SCALE: 1:7		ARTIKELNUMMER / ASSEMBLY NUMBER: 902.30XXX	
ZEICHNUNGSNUMMER / DRAWING NUMBER: u-902.310		INDEX: 01	FORMAT: A3

