



Battery holder 28V – 124.00269

## Battery holder 28V

Art. No.: 124.00269

*Delivery starting April 2026*

The battery holder is compatible with standard 28V batteries from Würth, Milwaukee and similar solutions. When selecting the appropriate 28V battery, please note that the operating time of the Ergoswiss lifting system is largely determined by the battery's capacity (Ah) (see technical data, p. 2).

The battery holder features four countersunk holes (Ø 4.8 mm) for secure screw mounting to the respective application.

An integrated click-lock mechanism allows for easy insertion and removal of the interchangeable batteries and ensures a secure hold during operation.

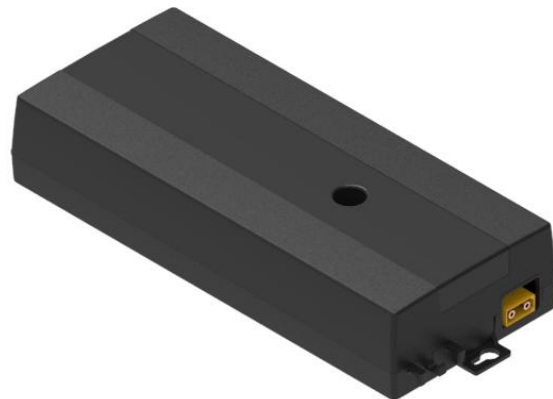
The electrical connection to the Ergoswiss SCT4 iSMPS 24V control box is made via a 1.8 m long connection cable.

All components of the battery holder are made of UL-compliant materials.

Download CAD data at [www.ergoswiss.com](http://www.ergoswiss.com)

## Compatible Ergoswiss control box

124.00265 – Control box SCT4 iSMPS 24V



## Compatible batteries

Art. No.: See manufacturer



Würth Li-Ion 28V  
(3Ah / 5Ah)



Milwaukee Li-Ion 28V  
(4Ah / 5Ah)

## Number of cycles with full battery charge - System SK / SL / SM / SN / SO

### Battery Würth/Milwaukee 28V (5Ah)

# Lifting elements	Max. System load [kg] (lbs)	Stroke length [mm] (in)	Lifting element type	Control box type 24V SCT4 iSMPS	Number of cycles per system load ②			Lifting speed [mm/s] (in/s)	Duty cycle ③
					100%	50%	0%		
1	150 (330)	300 (12")	① 1430	Battery 28V 5Ah	95	110	160	5 (0.2")	2/40
		400 (16")	① 1440	Battery 28V 5Ah	75	95	130		
2	300 (660)	300 (12")	① 1430	Battery 28V 5Ah	45	60	95	5 (0.2")	
		400 (16")	① 1440	Battery 28V 5Ah	35	45	75		
3	300 (660)	300 (12")	① 1430	Battery 28V 5Ah	40	45	70	5 (0.2")	
		400 (16")	① 1440	Battery 28V 5Ah	30	35	50		
4	400 (880)	300 (12")	① 1430	Battery 28V 5Ah	30	35	60	5 (0.2")	
		400 (16")	① 1440	Battery 28V 5Ah	20	25	40		

### Battery Würth/Milwaukee 28V (3Ah)

# Lifting elements	Max. System load [kg] (lbs)	Stroke length [mm] (in)	Lifting element type	Control box type 24V SCT4 iSMPS	Number of cycles per system load ②			Lifting speed [mm/s] (in/s)	Duty cycle ③
					100%	50%	0%		
1	150 (330)	300 (12")	① 1430	Battery 28V 3Ah	60	90	110	5 (0.2")	2/40
		400 (16")	① 1440	Battery 28V 3Ah	45	70	90		
2	300 (660)	300 (12")	① 1430	Battery 28V 3Ah	30	50	70	5 (0.2")	
		400 (16")	① 1440	Battery 28V 3Ah	20	40	60		
3	300 (660)	300 (12")	① 1430	Battery 28V 3Ah	25	30	45	5 (0.2")	
		400 (16")	① 1440	Battery 28V 3Ah	20	25	35		
4	400 (880)	300 (12")	① 1430	Battery 28V 3Ah	20	25	40	5 (0.2")	
		400 (16")	① 1440	Battery 28V 3Ah	15	20	30		

## Comparison with

### 124.00271 - Battery Ergoswiss 28V (6Ah)

# Lifting elements	Max. System load [kg] (lbs)	Stroke length [mm] (in)	Lifting element type	Control box type 24V SCT4 iSMPS	Number of cycles per system load ②			Lifting speed [mm/s] (in/s)	Duty cycle ③
					100%	50%	0%		
1	150 (330)	300 (12")	① 1430	Battery 28V 6Ah	100	130	200	6 – 7.5 (0.24 – 0.3")	1/9
		400 (16")	① 1440	Battery 28V 6Ah	80	110	160		
2	300 (660)	300 (12")	① 1430	Battery 28V 6Ah	50	80	100	6 – 7.5 (0.24 – 0.3")	
		400 (16")	① 1440	Battery 28V 6Ah	40	60	80		
3	300 (660)	300 (12")	① 1430	Battery 28V 6Ah	50	50	80	6 – 7.5 (0.24 – 0.3")	
		400 (16")	① 1440	Battery 28V 6Ah	40	40	60		
4	400 (880)	300 (12")	① 1430	Battery 28V 6Ah	35	35	70	6 – 7.5 (0.24 – 0.3")	
		400 (16")	① 1440	Battery 28V 6Ah	25	25	50		

① Lifting column type SK, SL, SM, SN or SO

② With fully charged battery

③ Duty cycle 1/9: Operating time max. 1 min, pause time 9 min